

# unidirectional pump - series XV

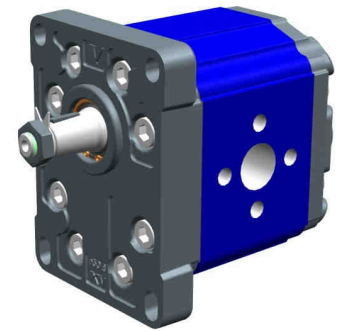
**XV-3P**

STANDARD EUROPEAN PUMP  
 ø50.8 FLANGE - TAPER SHAFT



**X 3 P 78 02 A B B A**

Series	X	series XV
Group	3	group 3
Category	P	unidirectional pump
Displacement	78	38
Flange	02	Ø50.8 right rotation
Shaft	A	CO001 - Tapered 1:8 - ø22 - key thk.4
Body	IN	B inlet - Ø51 Ø27 M10
	OUT	B outlet - Ø51 Ø27 M10
Cover	A	standard



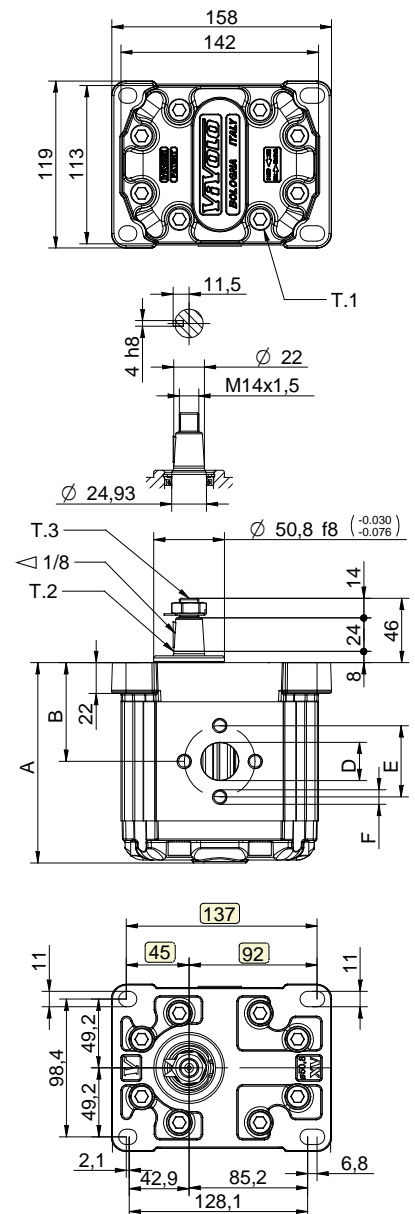
Reference **XP301**

Technical data table									
TYPE	Displacement cm3/rev	Max. Pressure		CODE					
		P1 bar	P3 bar	Left rotation			Right rotation		
XV-3P/15	14,89	300	320	X 3 P 66 01	A A A A	X 3 P 66 02	A A A A	A A A A	A A A A
XV-3P/18	17,37	300	320	X 3 P 68 01	A A A A	X 3 P 68 02	A A A A	A A A A	A A A A
XV-3P/21	21,10	280	300	X 3 P 70 01	A A A A	X 3 P 70 02	A A A A	A A A A	A A A A
XV-3P/27	26,97	250	270	X 3 P 72 01	A A A A	X 3 P 72 02	A A A A	A A A A	A A A A
XV-3P/32	32,27	250	270	X 3 P 74 01	A B B A	X 3 P 74 02	A B B A	A B B A	A B B A
XV-3P/38	38,47	250	270	X 3 P 78 01	A B B A	X 3 P 78 02	A B B A	A B B A	A B B A
XV-3P/43	43,44	250	270	X 3 P 79 01	A B B A	X 3 P 79 02	A B B A	A B B A	A B B A
XV-3P/47	47,16	230	250	X 3 P 80 01	A B B A	X 3 P 80 02	A B B A	A B B A	A B B A
XV-3P/51	50,88	230	250	X 3 P 81 01	A B B A	X 3 P 81 02	A B B A	A B B A	A B B A
XV-3P/54	54,60	230	250	X 3 P 82 01	A B B A	X 3 P 82 02	A B B A	A B B A	A B B A
XV-3P/61	60,81	230	250	X 3 P 83 01	A C C A	X 3 P 83 02	A C C A	A C C A	A C C A
XV-3P/64	64,53	210	230	X 3 P 85 01	A C C A	X 3 P 85 02	A C C A	A C C A	A C C A
XV-3P/70	70,74	200	220	X 3 P 86 01	A C C A	X 3 P 86 02	A C C A	A C C A	A C C A
XV-3P/74	74,46	180	200	X 3 P 87 01	A C C A	X 3 P 87 02	A C C A	A C C A	A C C A
XV-3P/90	86,87	150	170	X 3 P 89 01	A C C A	X 3 P 89 02	A C C A	A C C A	A C C A

P1) Max. working pressure - P3) Max. peak pressure

For heavy-duty applications, it is recommended to check the admissible torque of the shaft

Dimensions table									
TYPE	Weight kg	A	B	D	E	F	D	E	F
		mm	mm	IN			OUT		
XV-3P/15	7,010	124,0	61,0	ø20	40	M8	ø20	40	M8
XV-3P/18	7,070	126,0	62,0	ø20	40	M8	ø20	40	M8
XV-3P/21	7,150	129,0	63,5	ø20	40	M8	ø20	40	M8
XV-3P/27	7,250	133,0	65,5	ø20	40	M8	ø20	40	M8
XV-3P/32	7,390	138,0	68,0	ø27	51	M10	ø27	51	M10
XV-3P/38	7,520	143,0	70,5	ø27	51	M10	ø27	51	M10
XV-3P/43	7,630	147,0	72,5	ø27	51	M10	ø27	51	M10
XV-3P/47	7,710	150,0	74,0	ø27	51	M10	ø27	51	M10
XV-3P/51	7,790	153,0	75,5	ø27	51	M10	ø27	51	M10
XV-3P/54	7,870	156,0	77,0	ø27	51	M10	ø27	51	M10
XV-3P/61	8,010	161,0	79,5	ø36	62	M10	ø36	62	M10
XV-3P/64	8,090	164,0	81,0	ø36	62	M10	ø36	62	M10
XV-3P/70	8,220	169,0	83,5	ø36	62	M10	ø36	62	M10
XV-3P/74	8,300	172,0	85,0	ø36	62	M10	ø36	62	M10
XV-3P/90	8,570	182,0	90,0	ø36	62	M10	ø36	62	M10



T.1 = 60÷65 [Nm] - screw tightening torque M10

T.3 = 75 [Nm] - torque wrench setting 22

T.2 = 482 [Nm] - admissible shaft torque (N.B. When choosing a shaft, always check the admissible torque).